

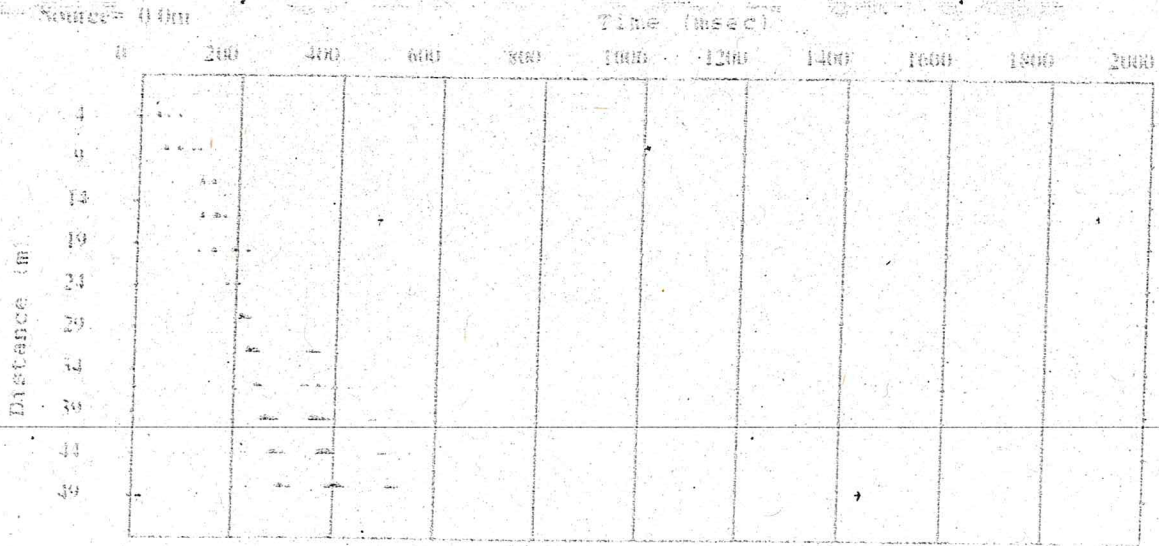
MULTICHANNEL ANALYSIS SURFACE WAVES - MASW I

Strumentò DoReMI - SARA.pg - 16 bit - geofoni 4.5Hz SARA.pg data: 10.11.2010

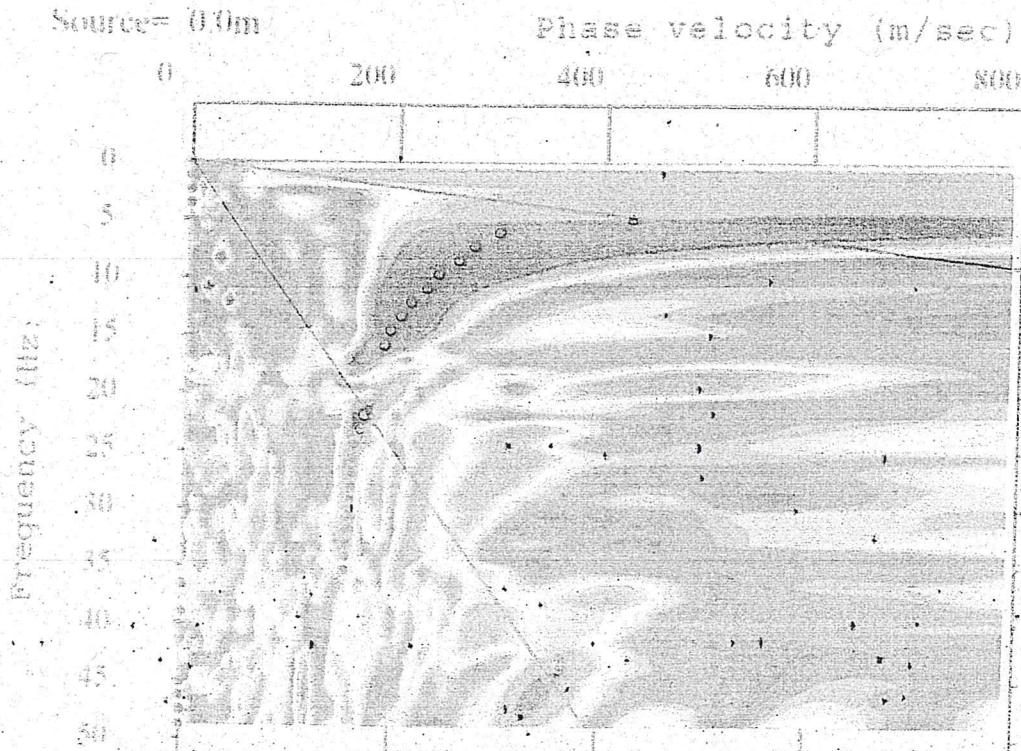
energizzazione Massa Battente 10Kg - committente:

direzione cantiere: Dott. Geol. BEGGIATO GIANCARLO

cantiere: VIA POTENTE - R4 - SAN CASIANO V.PESA



2025-11-10_12-45-26_05000_0200_012_Acquis_SEG2.dat



Dispersion curve : 2025-11-10_12-45-26

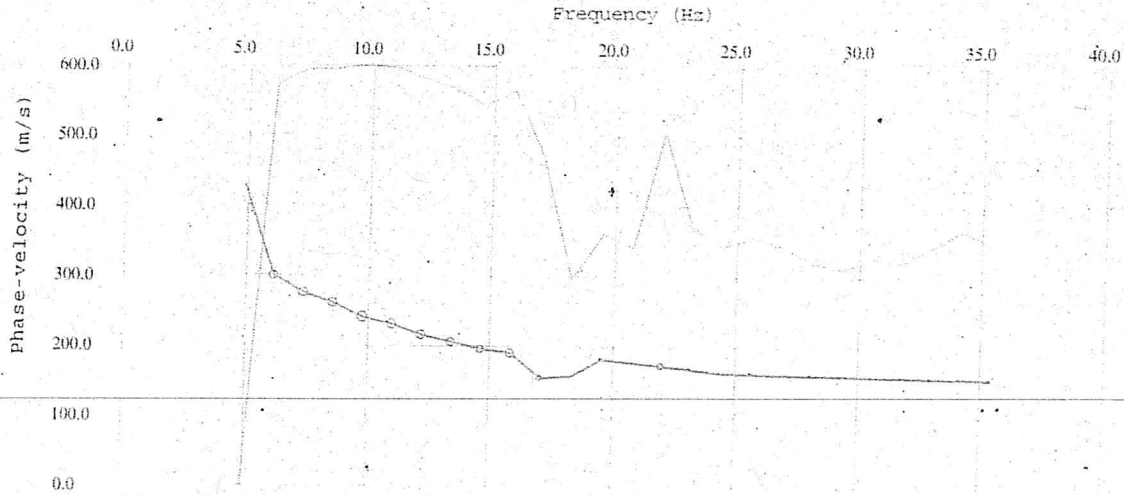
MULTICHANNEL ANALYSIS SURFACE WAVES – MASW 1

Strumento DoReMi – SARA.pg - 16 bit - geofoni 4.5Hz SARA.pg – data: 10.11.2010

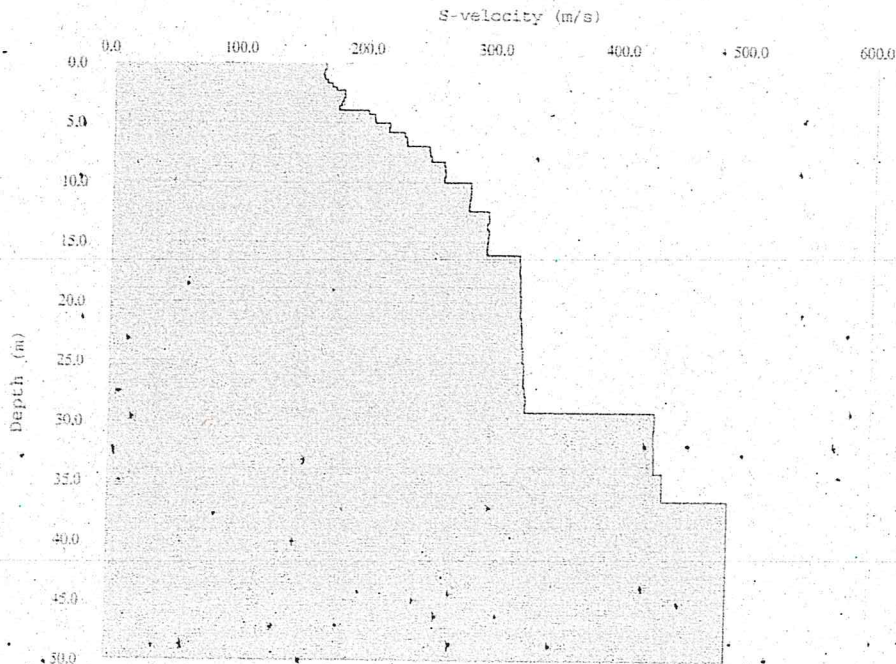
energizzazione Massa Battente 10Kg - committente:

direzione cantiere: Dott. Geol. BEGGIATO GIANCARLO

cantiere: VIA POTENTE – R4 – SAN CASVIANO V.PESA



Dispersion curve : 2025-11-10_12-45-26_05000_0200_012_Acquis_SEG2.dat



S-velocity model : 2025-11-10_12-45-26_05000_0200_012_Acquis_SEG2.dat
Average V_s 30m = 268.0 m/s